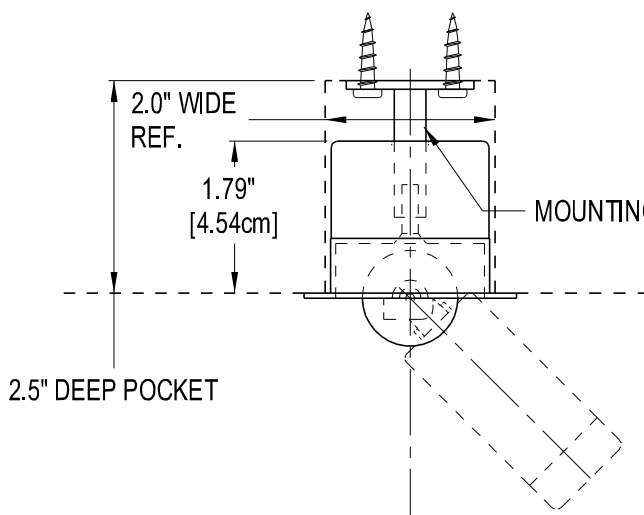
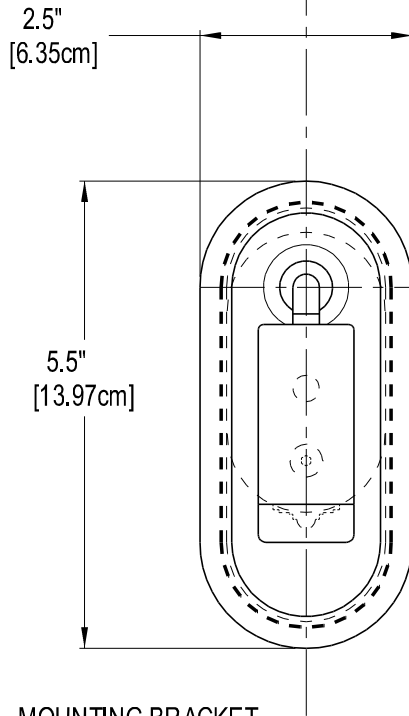


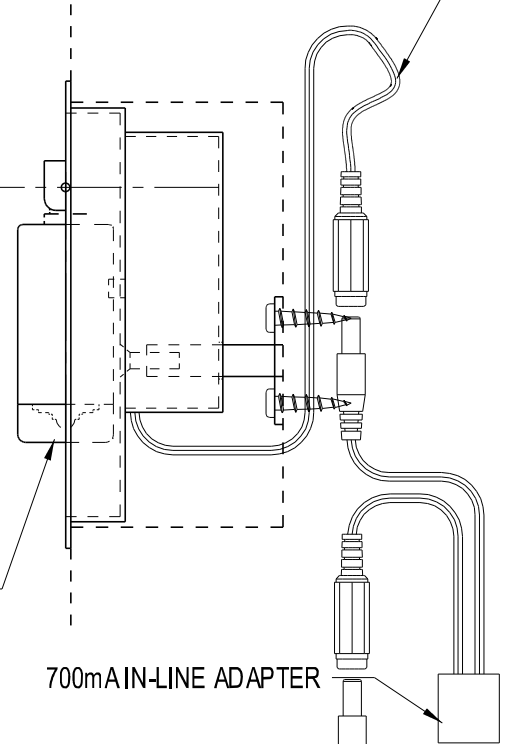
Q-06703



FINISH: BRUSHED NICKEL & #2 LACQUER
 CORD LENGTH: 14' TOTAL w/ PLUG-IN DRIVER, 120v
 BULB TYPE: INCLUDED w/ LED, 3 watt (WARM WHITE)
 SWITCHING: ON WHEN ARM EXTENDED
 OFF WHEN ARM RETRACTED
 UL RATED



8' CORD LENGTH



LED BULB
 3 WATT
 WARM WHITE

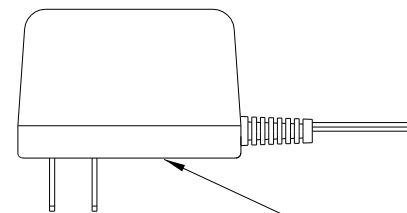
700mA IN-LINE ADAPTER

MOUNTING BRACKET

PICTORIAL

2" DIA

3.0" CTR.



LED POWER SUPPLY
 CLASS 2
 PLUG-IN FOR 110v OUTLET
 (6' CORD)

ALLEN HEAD MOUNTING SCREW
 (FINISHED TO MATCH)

CUTOUT POCKET IN
 HEADBOARD PANEL
 FRAME

CHASEWAY FOR LOW VOLTAGE
 WIRE @ REAR
 PLEASE CONFIRM WITH
 LOCAL CODES