

Ø 1.0" [2.54cm] FINIAL  
BRUSHED BRONZE  
& GLOSS LACQUER

Ø 13.00"  
[33.02cm]

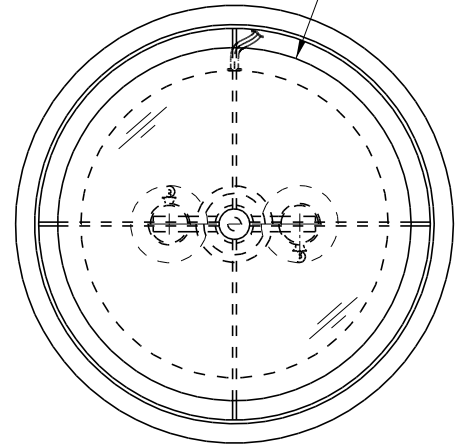
Ø 11.50" [29.21cm]  
TOP DIFFUSER  
CLEAR FROSTED ACRYLIC  
w/ #2-2 LAMINATE

9.00"  
[22.86cm]

Ø 14.25"  
[36.20cm]

Ø 1.57" [4.00cm]

9.875" [25.08cm]  
BRUSHED BRONZE  
& GLOSS LACQUER



Ø 2" [5.08cm]

56.50" O.H.T.  
[143.51cm]

**CHAPMAN.**   
AVON, MASSACHUSETTS 02322  
U.S.A.

Q-12029

FLOOR LAMP

34.125" [86.68cm]  
WOOD BODY w/  
WALNUT FINISH  
(#1634)

FINISH: BRUSHED BRONZE & GLOSS LACQUER  
WOOD BODY: w/ WALNUT FINISH (#1634)  
DIFFUSER: CLEAR FROSTED ACRYLIC w/#2-2 LAMINATE  
SHADE: HARDBACK, #2-2 w/ FLAME RETARDANT  
SELF TRIM AT TOP & BOTTOM  
4 ARM SPREADER w/ STD. WASHER (BRASS FINISH)  
CORD COLOR/LENGTH: CLEAR SILVER SPT-2 / 8' EXP.  
SOCKET TYPE: MEDIUM BASE (E26)  
WATTAGE EQ.: 60W  
BULB SPEC: (2 x) SELF BALLASTED LED /18W (BY OTHERS)  
SWITCHING: PULL CHAIN AT SOCKETS, ON / OFF (BRASS)  
UL RATED

SCALE: 1/6

2.50"  
[6.35cm]

Ø 2.50"  
[6.35cm]

BRUSHED BRONZE  
& GLOSS LACQUER

1"  
[2.54cm]

Ø 10"  
[25.40cm]

WEIGHTED BASE with FELT ON BOTTOM